

# MISURE RAMAN (NAPORIBA)

DATE 19/06/2020

Tamb=20.8C umid 52% Cond. Generale +Daikin (T=22C)

FILES C:\MED-CHHAB\2020\200619\200619M\*.ls6 +.txt

TOPICS: Conto terzi Prof.A. Caruso

OPERATOR: S. Agnello, KIT: 532 nm (accensione strumento overnight)

N	SAMPLE	ND FILT	Acq T (s)	Acc	DET	OBJ	Grat (l/mm)	Ecc (nm)	Hole (µm)	RANGE (cm <sup>-1</sup> )	SPECTRO (cm <sup>-1</sup> )	Notes
01	Si_Horiba	50%	0.5	5	CCD	100x	600	532	200	10-3000	--	600 l/mm Offset:-16 Coeff.:0.00605791
02	Si_Horiba	100%	2	5	CCD	100x	1800	532	200	10-3000	--	1800 l/mm Offset:-93 Coeff.:0.00201928
03	GBL-19-2	5%	2	5	CCD	50x LWD	600	532	200	10-3000	--	Zona scura
04	GBL-19-2	5%	2	5	CCD	50x LWD	600	532	200	10-3000	--	Zona scura
05	GBL-19-2	25%	2	5	CCD	50x LWD	600	532	200	10-4500	--	filamento
06	GBL-19-2	25%	2	5	CCD	50x LWD	600	532	200	10-4500	--	Zona scura
07	Araldite	25%	2	5	CCD	50x LWD	600	532	200	10-4500	--	Bordo campione
08	GBL-19-2	25%	2	5	CCD	50x LWD	600	532	200	10-4500	--	Zona scura
09	GBL-19-2	25%	2	5	CCD	50x LWD	600	532	200	10-4500	--	Zona vicina alla m8
10	GBL-19-2	25%	2	5	CCD	50x LWD	600	532	200	10-4500	--	Zona scura
11	GBL-19-2	25%	2	5	CCD	50x LWD	600	532	200	10-4500	--	Zona chiara
12	GBL-19-2	25%	2	5	CCD	50x LWD	600	532	200	10-4500	--	filamento
13	GBL-19-2	25%	2	5	CCD	50x LWD	600	532	200	10-4500	--	Filamento nuova posizione
14	GBL-19-2	25%	2	5	CCD	50x LWD	600	532	200	10-4500	--	Altro Filamento
15	GBL-19-2	25%	2	5	CCD	50x LWD	600	532	200	10-4500	--	Vicino Filamento m14
16	GBL-19-2	25%	2	5	CCD	50x LWD	600	532	200	10-4500	--	Vicino Filamento m14 parte scura
17	Si07-77	25%	2	5	CCD	50x LWD	600	532	200	10-4500	--	Zona chiara (dentro vetrino lab)
18	Si07-77	25%	2	5	CCD	50x LWD	600	532	200	10-4500	--	Zona scura
19	GBL-19-3	25%	2	5	CCD	50x LWD	600	532	200	10-4500	--	Zona chiara
20	GBL-19-3	25%	2	5	CCD	50x LWD	600	532	200	10-4500	--	Zona scura
21	GBL-19-3	25%	2	5	CCD	50x LWD	600	532	200	10-4500	--	Zona scura avvallata
22	GBL-19-3	25%	2	5	CCD	50x LWD	600	532	200	10-4500	--	Filamento
23	GBL-19-3	25%	2	5	CCD	50x LWD	600	532	200	10-4500	--	Filamento
24	GBL-19-3	25%	2	5	CCD	50x LWD	600	532	200	10-4500	--	striatura
25	GBL-19-3	25%	2	5	CCD	50x LWD	600	532	200	10-4500	--	Zona scura
26	GBL-19-3	25%	2	5	CCD	50x LWD	600	532	200	10-4500	--	Zona scura



LabSpec 6 - HORIBA Scientific

Spectra Video Maps 3D Report Scripts

Video: 20061903

Y (µm)

X (µm)

Reads: 600 grimm | 532 nm | Laser Off | 5% | AE | AF | DN | ICS | SR | AC

Warning: LabRAM 1 read correct

EN 10:36 19/06/2020

Analysis Display Methods  
ParticleFinder Maintenance

Browser Acquisition Info Processing

FlatField Off

Options

Acquisition parameters

Spectro (cm<sup>-1</sup>) 2395.49

Range 100 3000

	From	To	Time (s)
1	100	3000	1
2	890	1000	1

Use extended spectral range  
 Use auto scanning mode  
 Adjust intensity

Return spectrometer: No

AE level (crs) 1000

Acq. time (s) 2

Accumulation 5

RTD time (s) 1

Autofocus Off

DiscScan Spot Off

Shape Square

Stack 80

Step 10

Set to map pixel on start of XY map

Title 20061903

Instant processing

Acquisition options

Instrument setup

Detector Synapse

Stage XY Marchausser

Objective x50 hwd

Scating 600 grimm

Laser 532 nm

ND Filter 5%

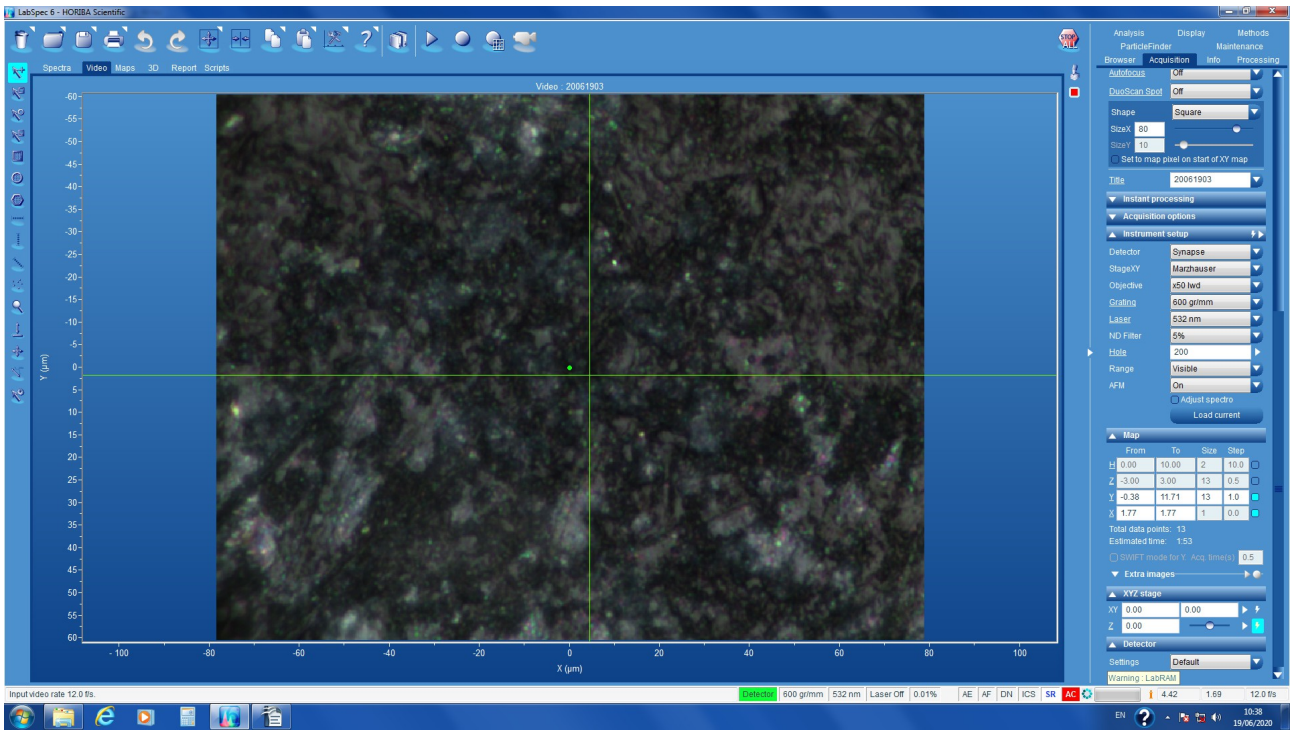
Hold 200

Range Visible

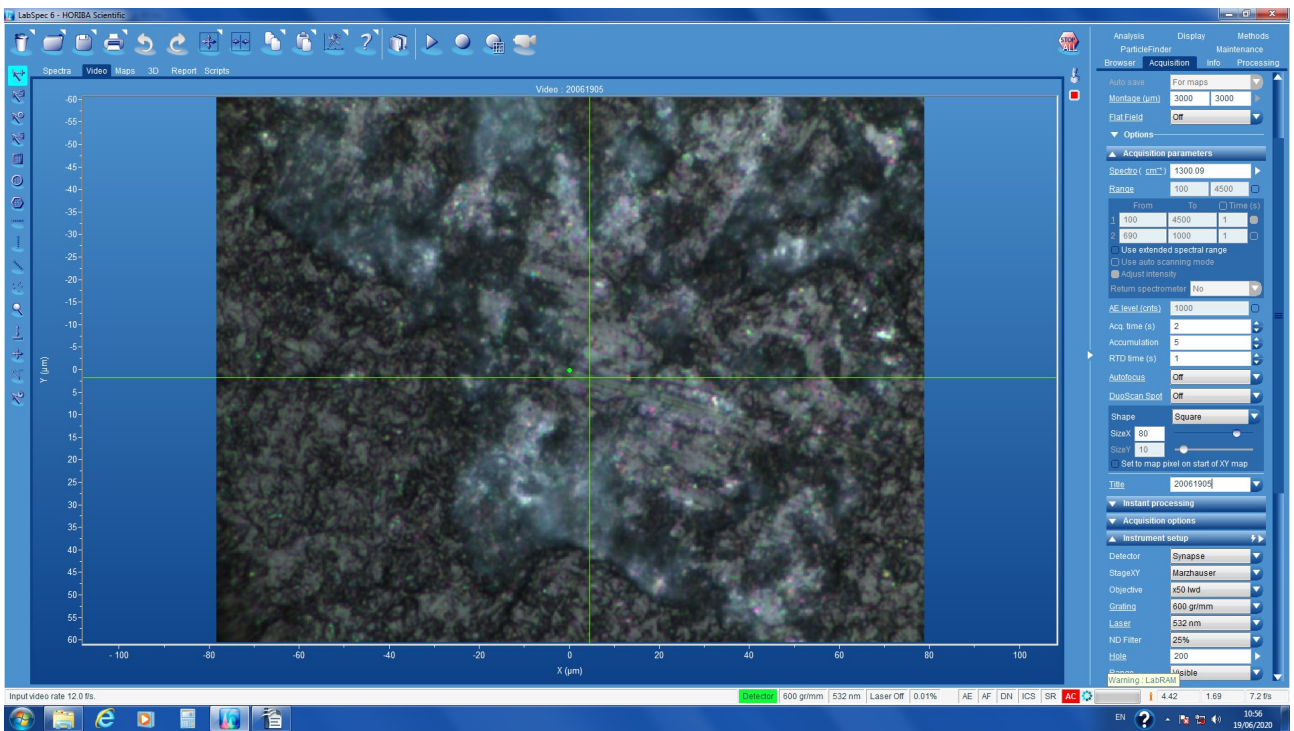
AFM On

Adjust spectra

m3



m4



m5

LabSpec 6 - HORIBA Scientific

Analysis Display Methods  
 ParticleFinder 200 Maintenance

Browser Acquisition Info Processing

Autofocus Off  
 DuoScan Scoop Off  
 Shape Square  
 SizeX 80  
 SizeY 110  
 Get to map pixel on start of XY map  
 Title 20061905  
 Instant processing

Acquisition options

Instrument setup

Detector Synapse  
 StageXY Marchausser  
 Objective x50 hed  
 Grating 600 grimm  
 Laser 532 nm  
 ND Filter 25%  
 Hole 200  
 Range Visible  
 AFM On  
 Adjust spectra  
 Load current

Map

From	To	Size	Step
0.00	10.00	2	10.0
3.00	3.00	13	0.5
8.38	11.71	13	1.0
1.77	1.77	1	0.0

Total data points: 13  
 Estimated time: 3.45  
 SWFT mode for Y Acc. (mm/s) 0.5

Extra images

XYZ stage

X1 0.00  
 X2 47.20  
 Z 0.60

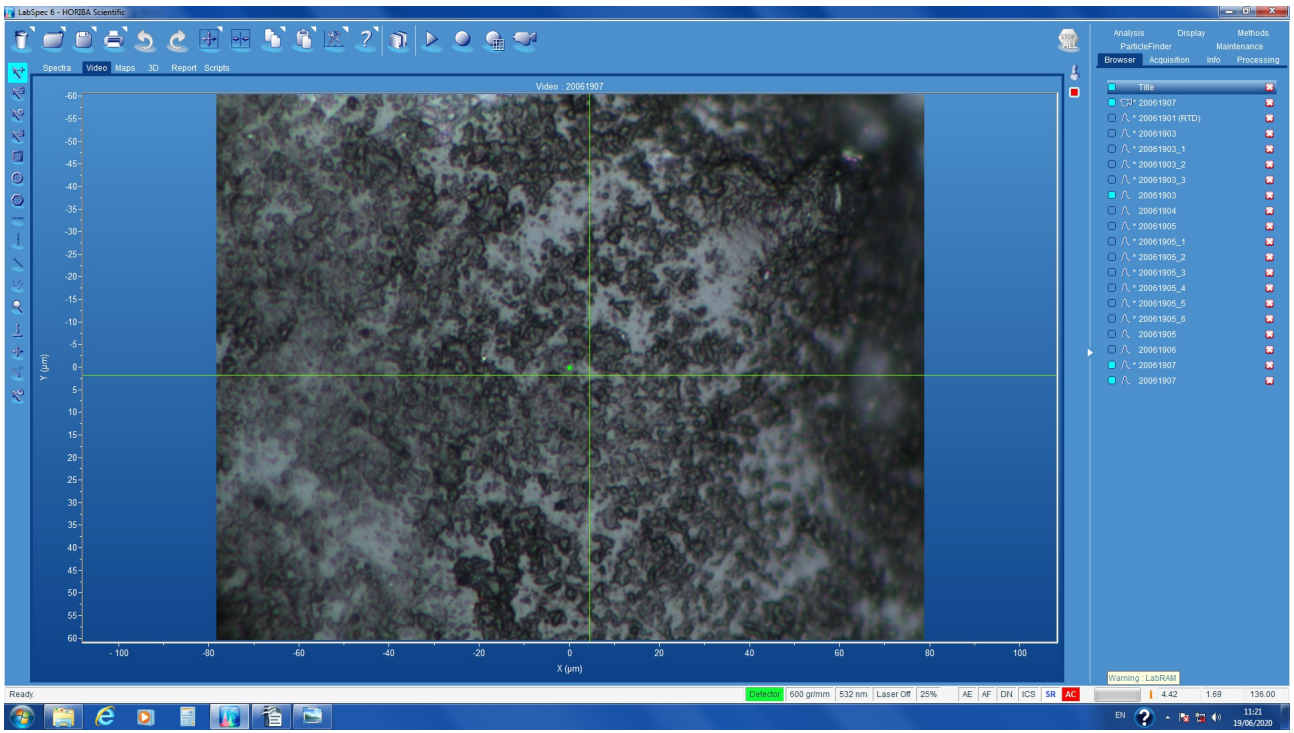
Detector  
 Settings Default

Warning: LabRAM

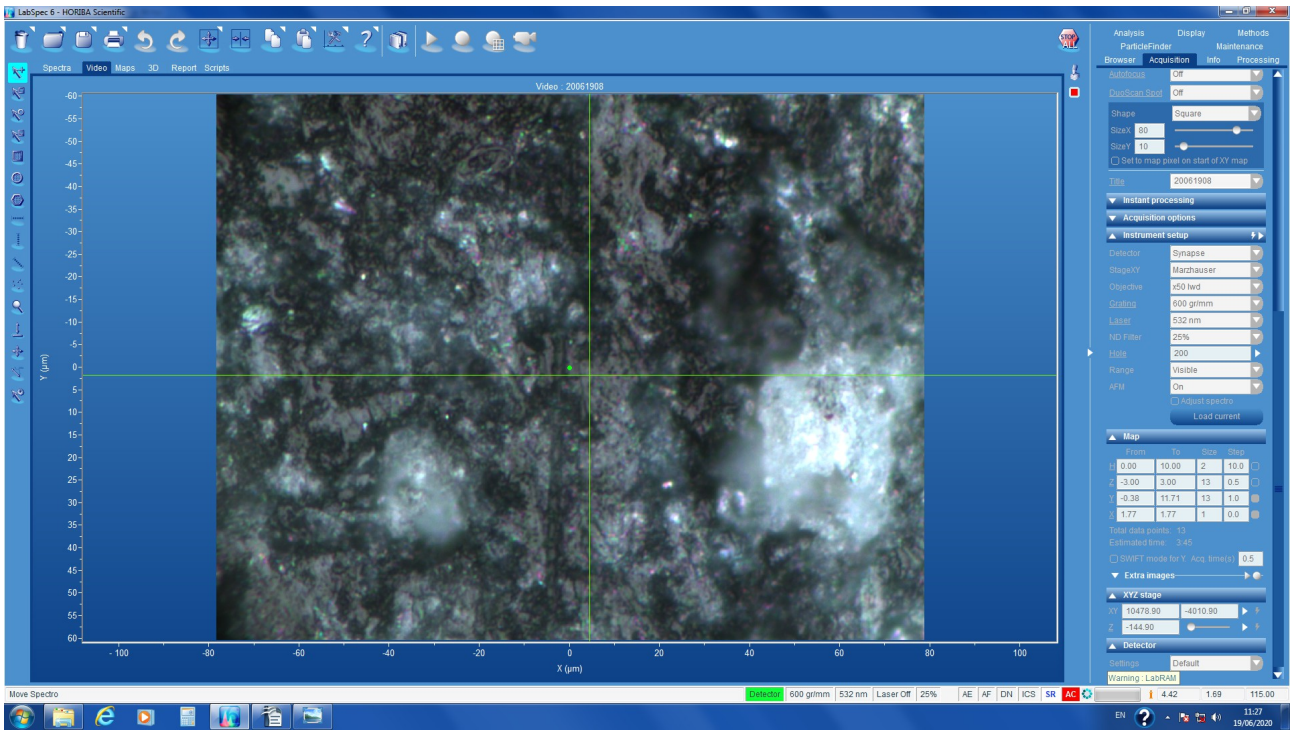
Input video rate: 12.0 fps  
 600 grimm | 532 nm | Laser Off | 0.01% | AE | AF | DN | ICS | SR | AC

EN 11:02 19/06/2020

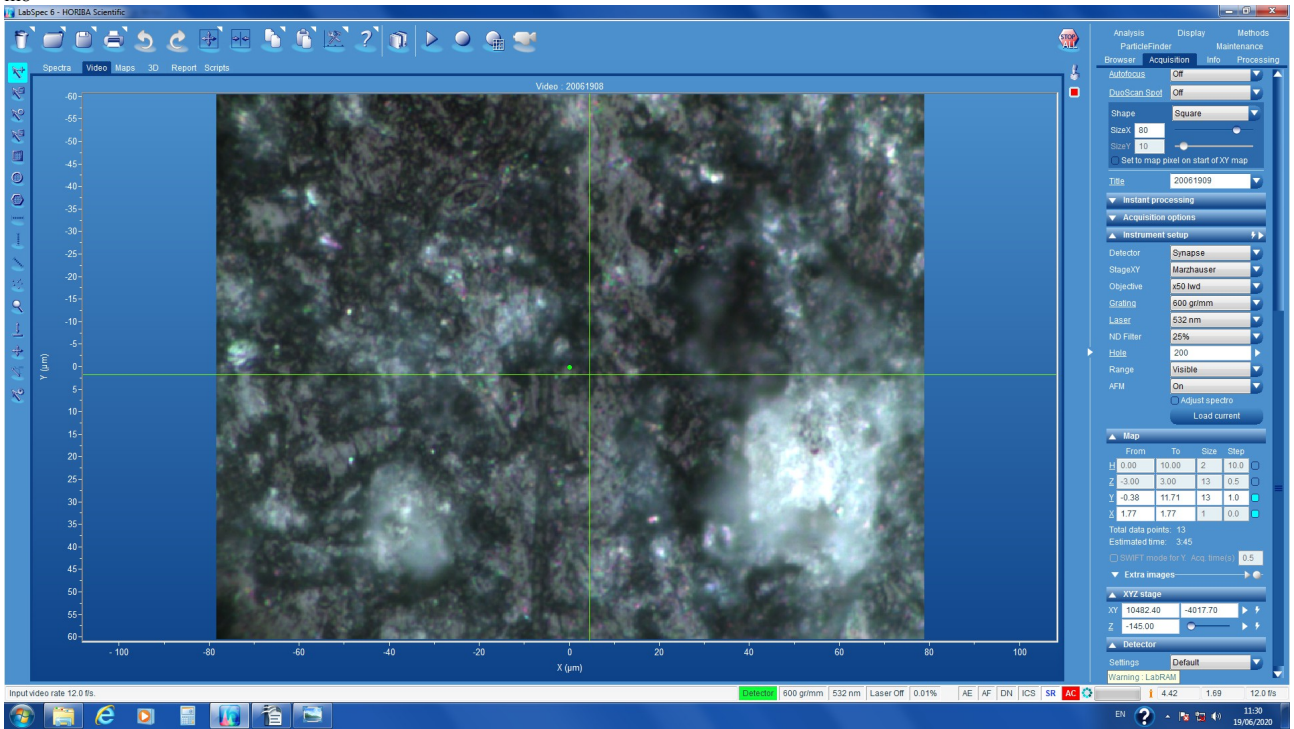
m6



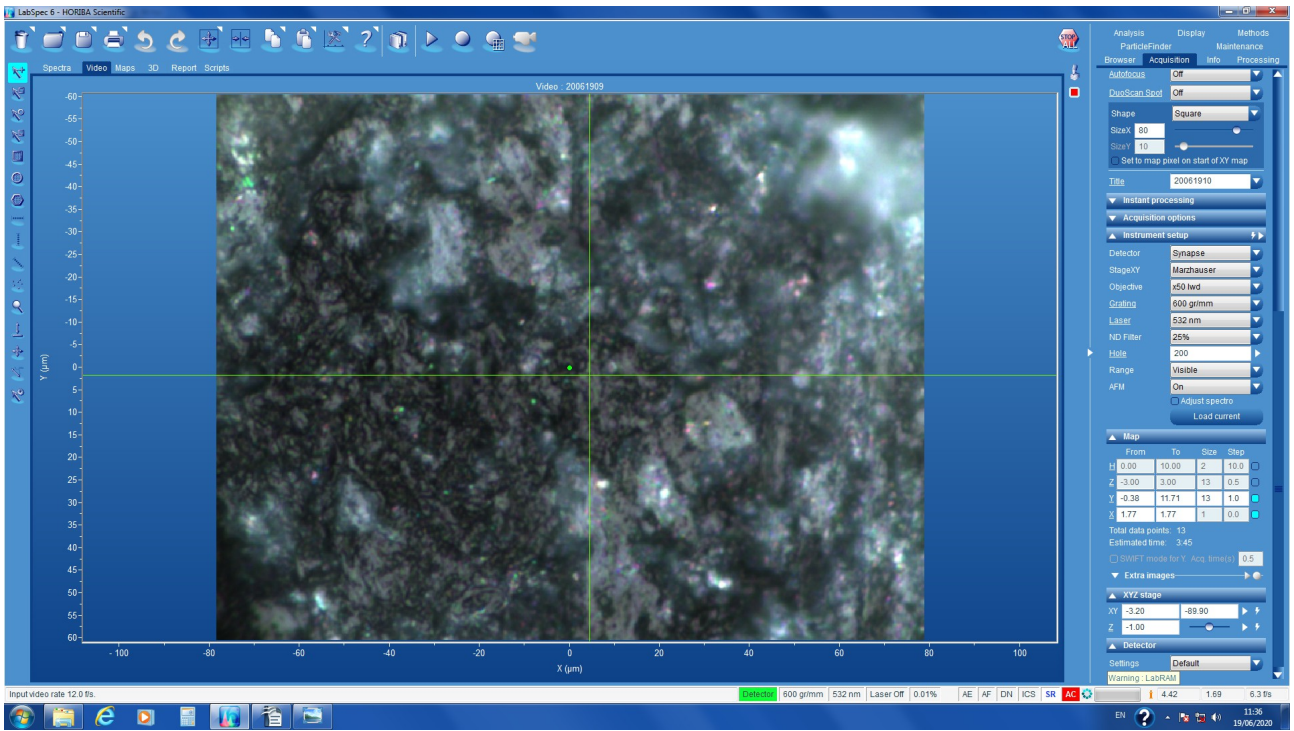
m7



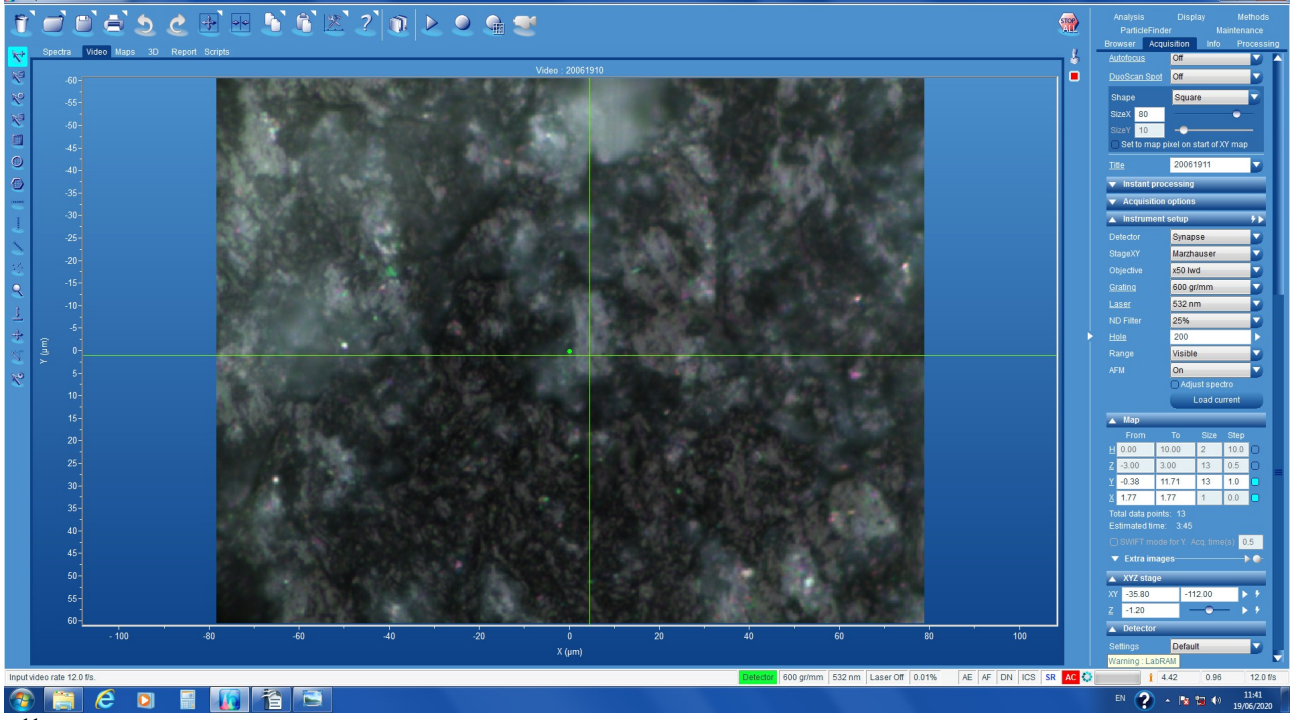
m8



m9

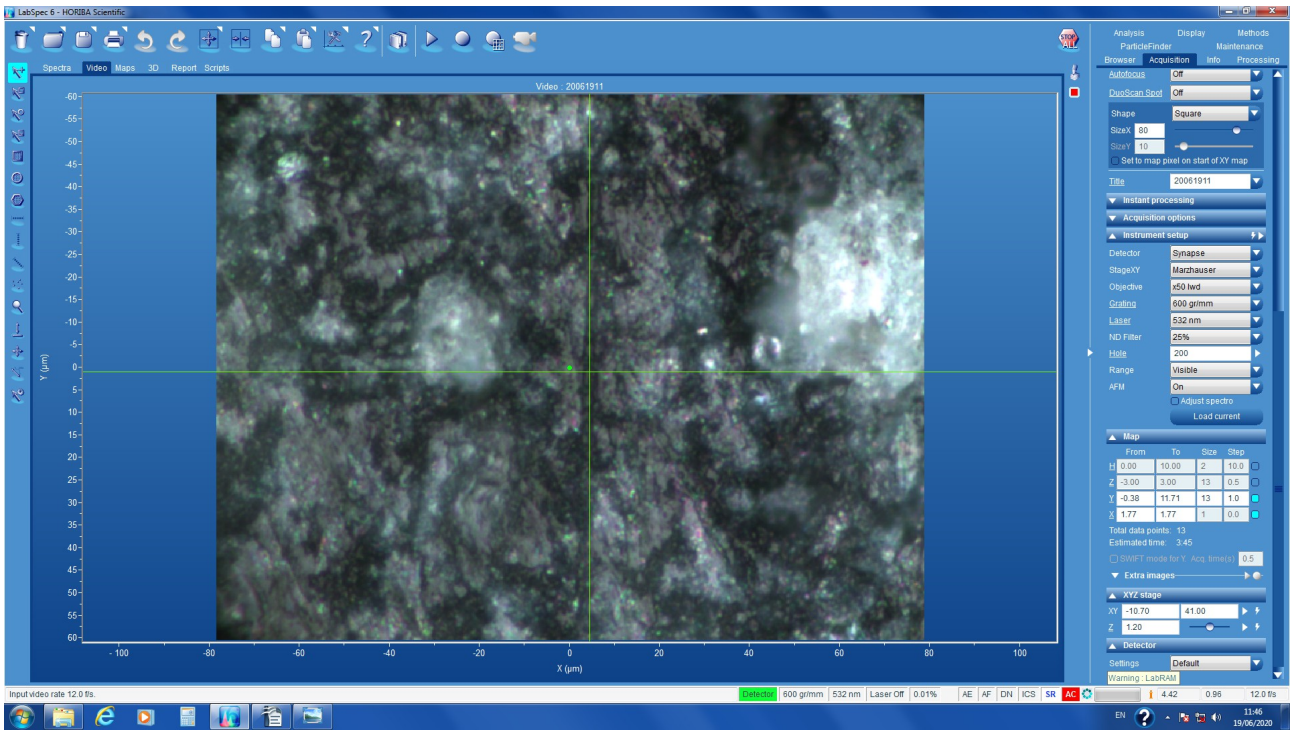


m10

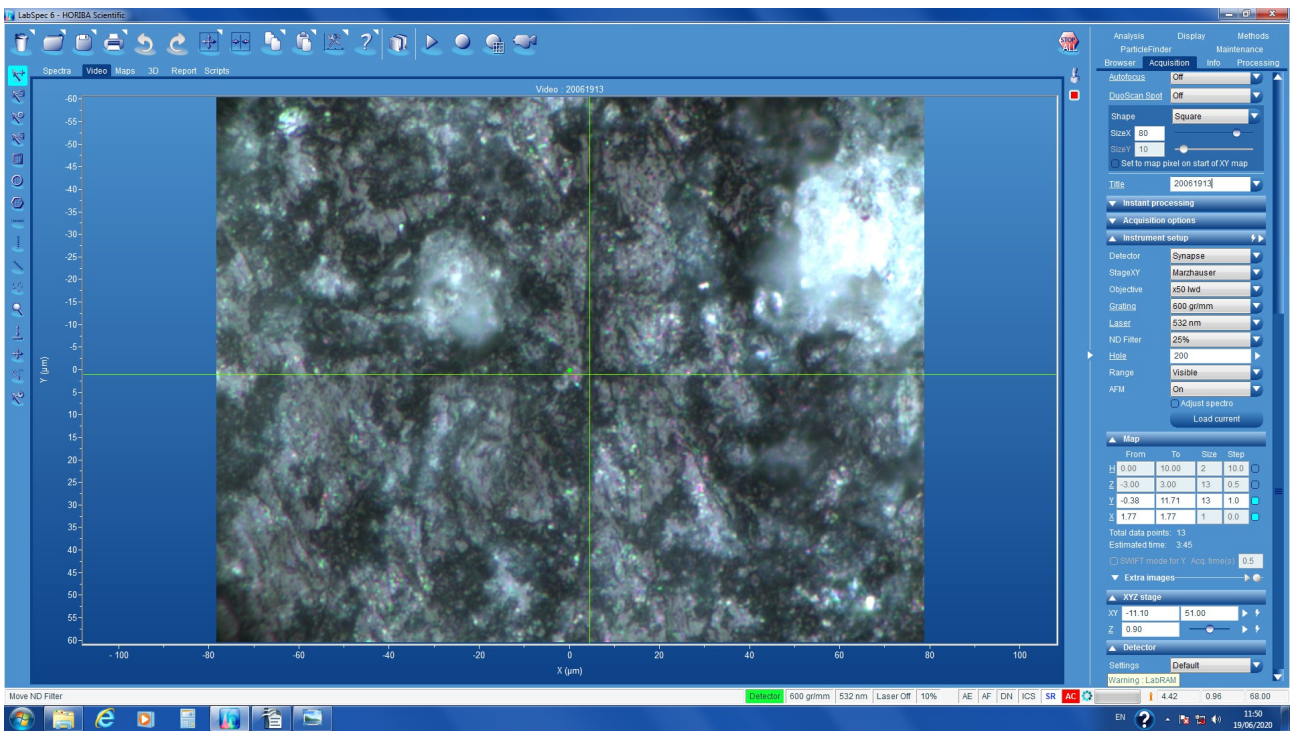


m11

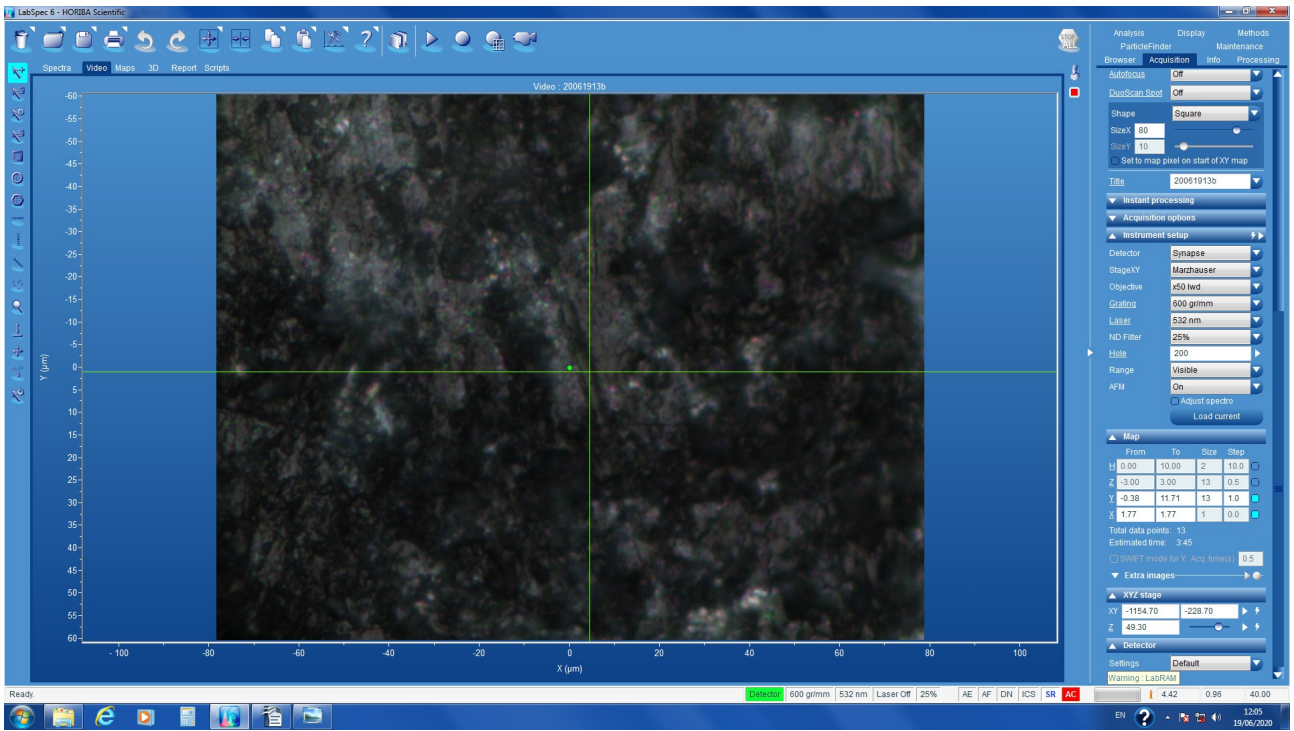




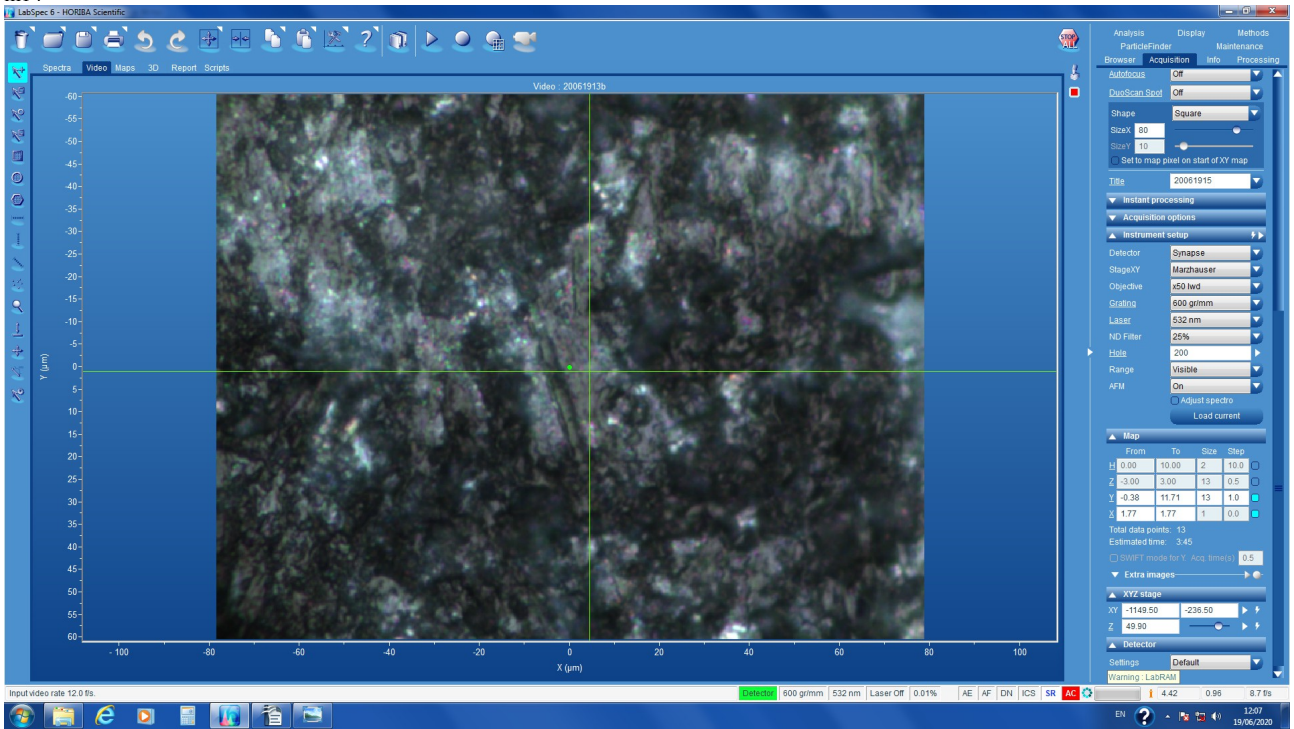
m12



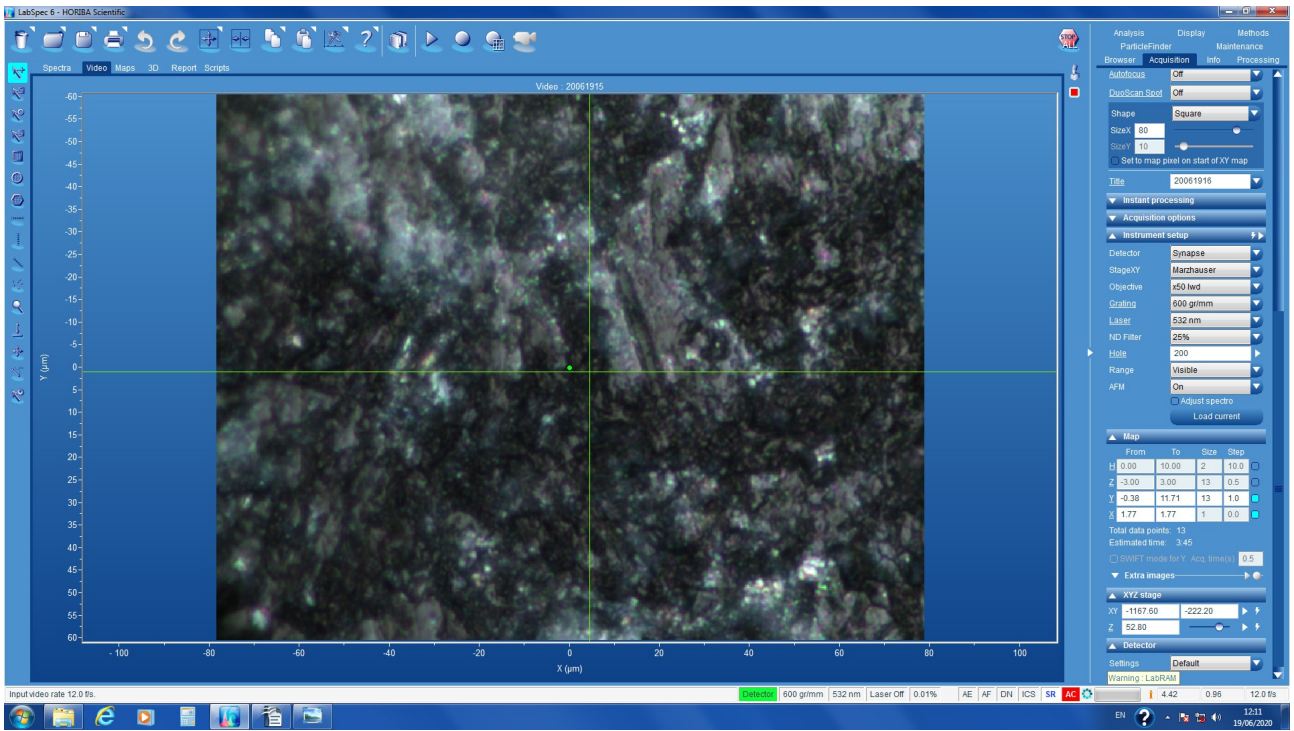
m13



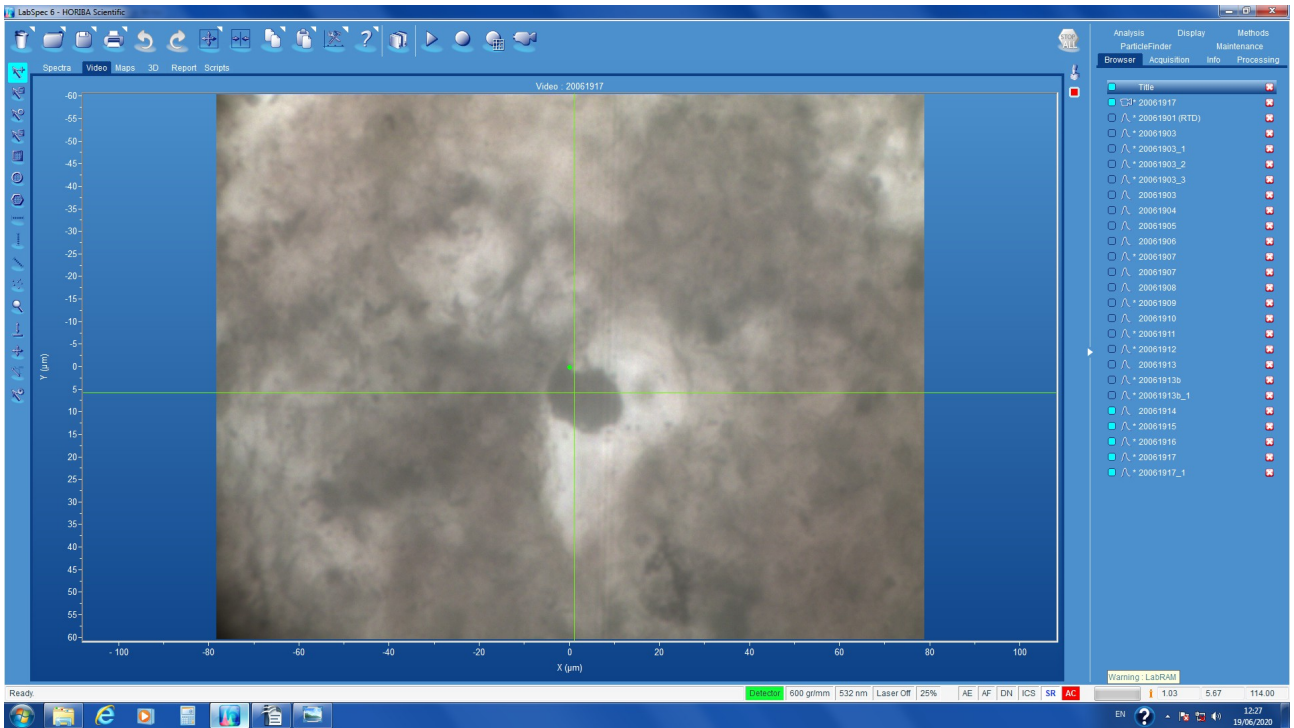
m14



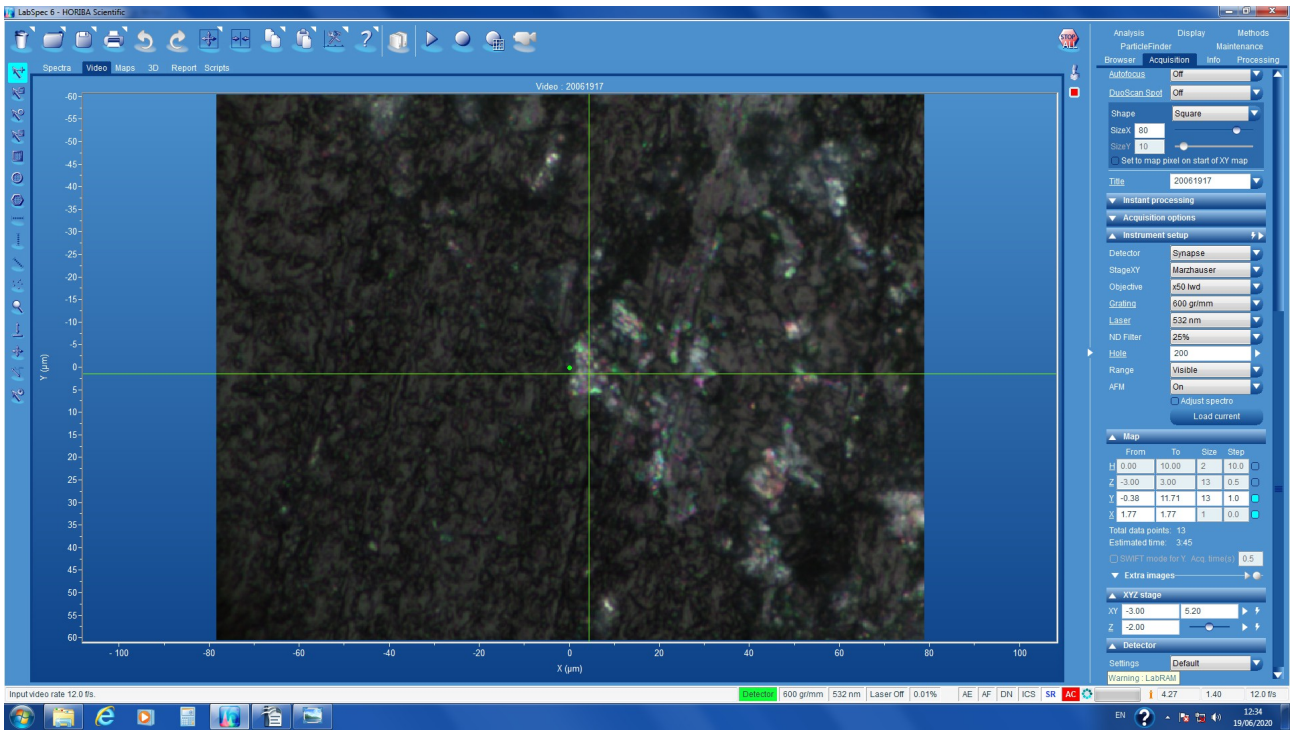
m15



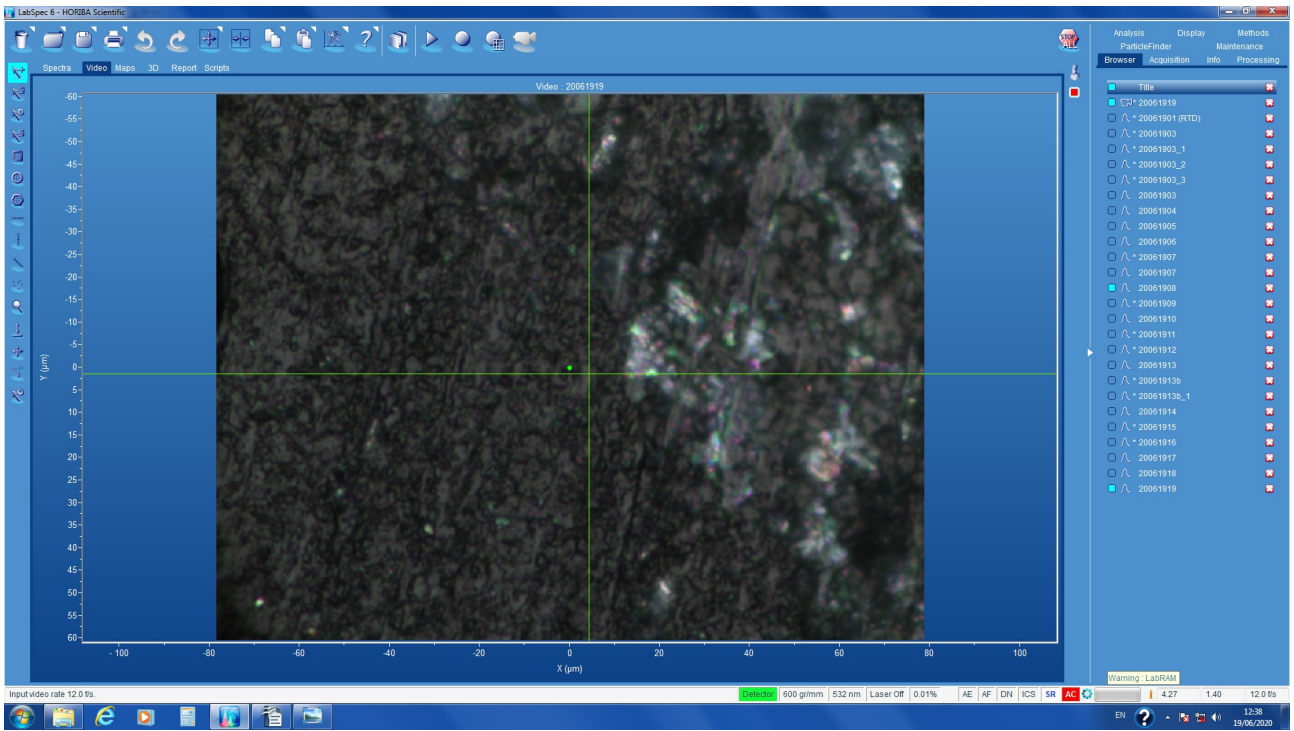
m16



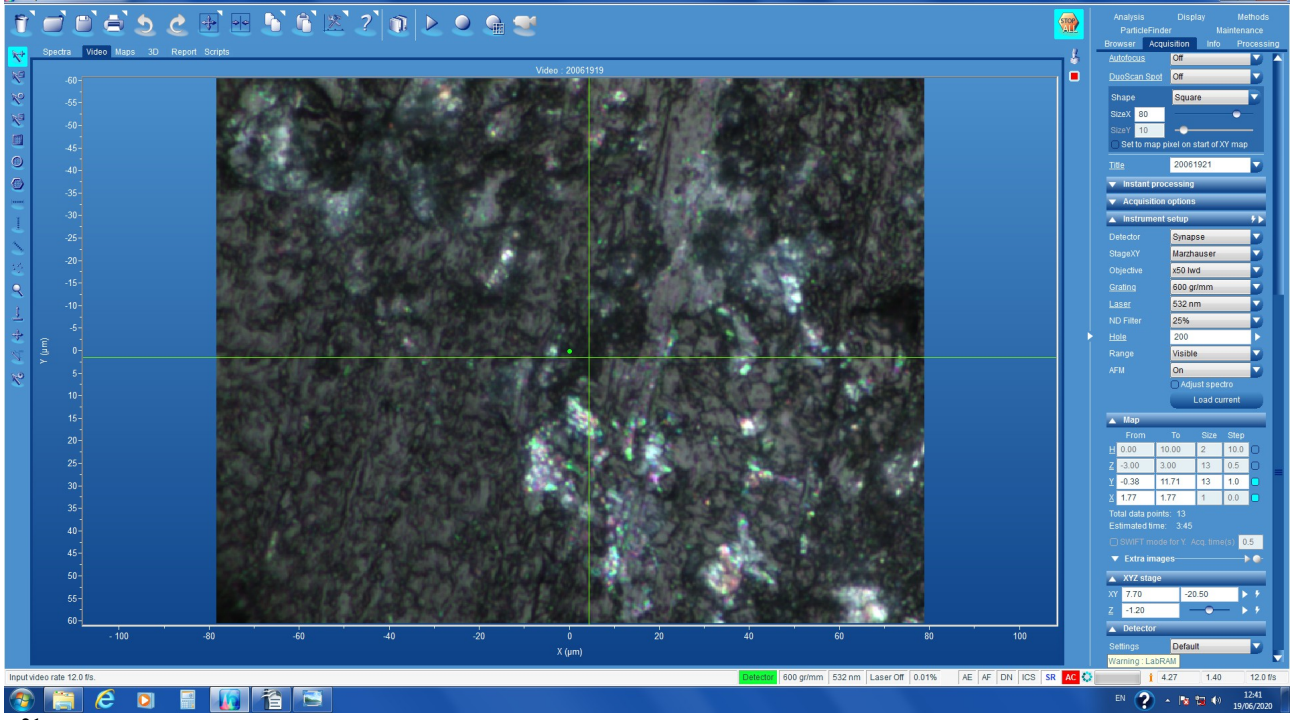
m18



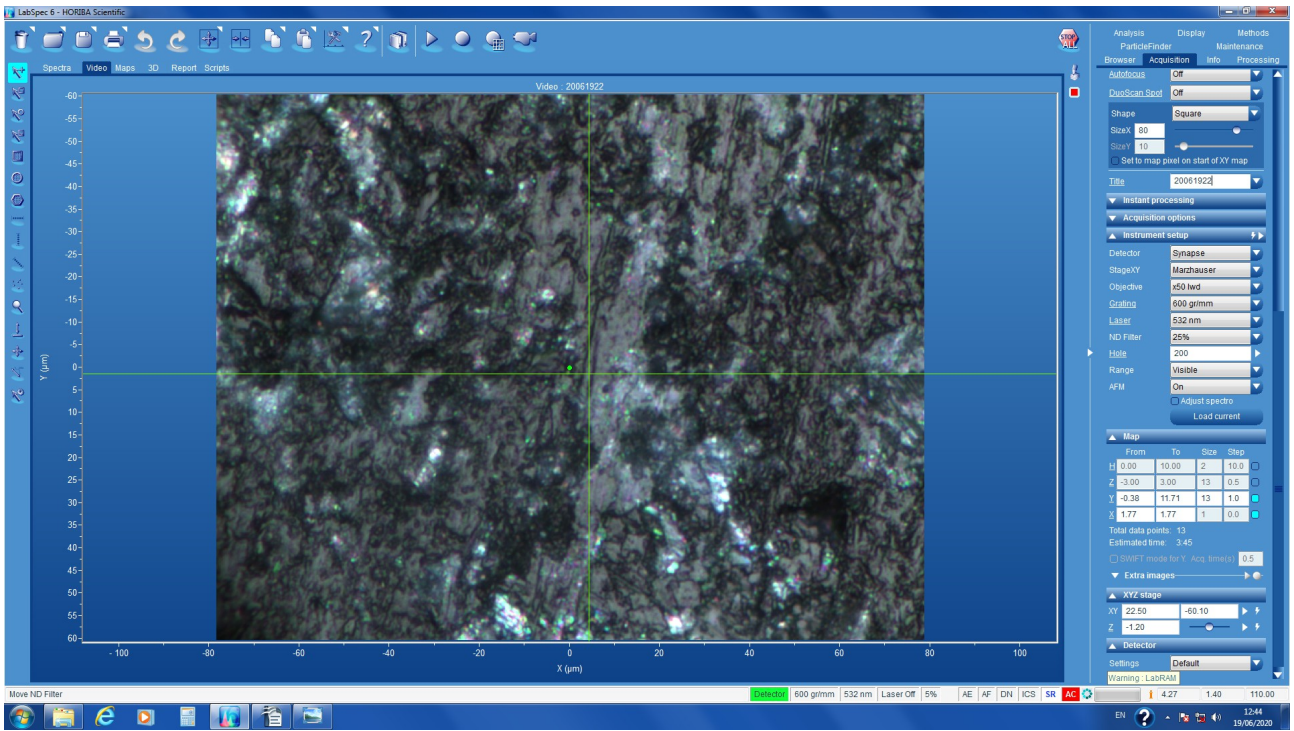
m19



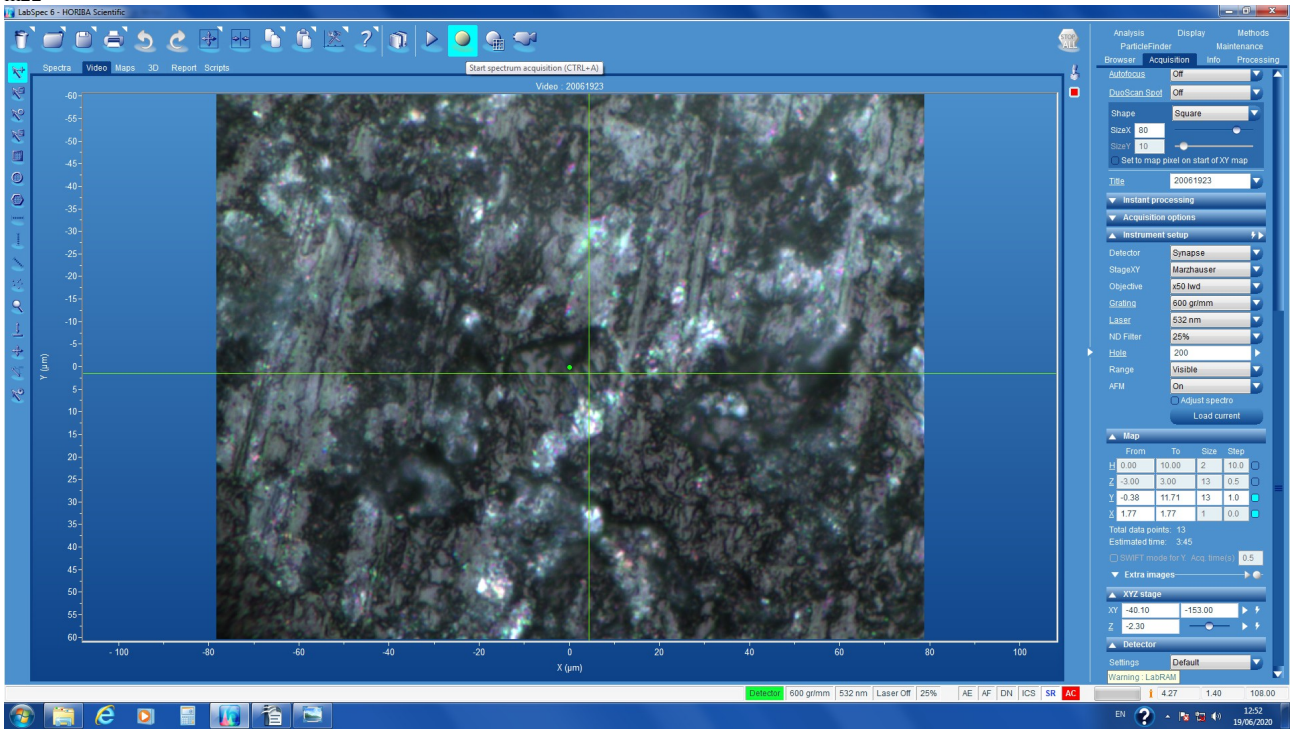
m20



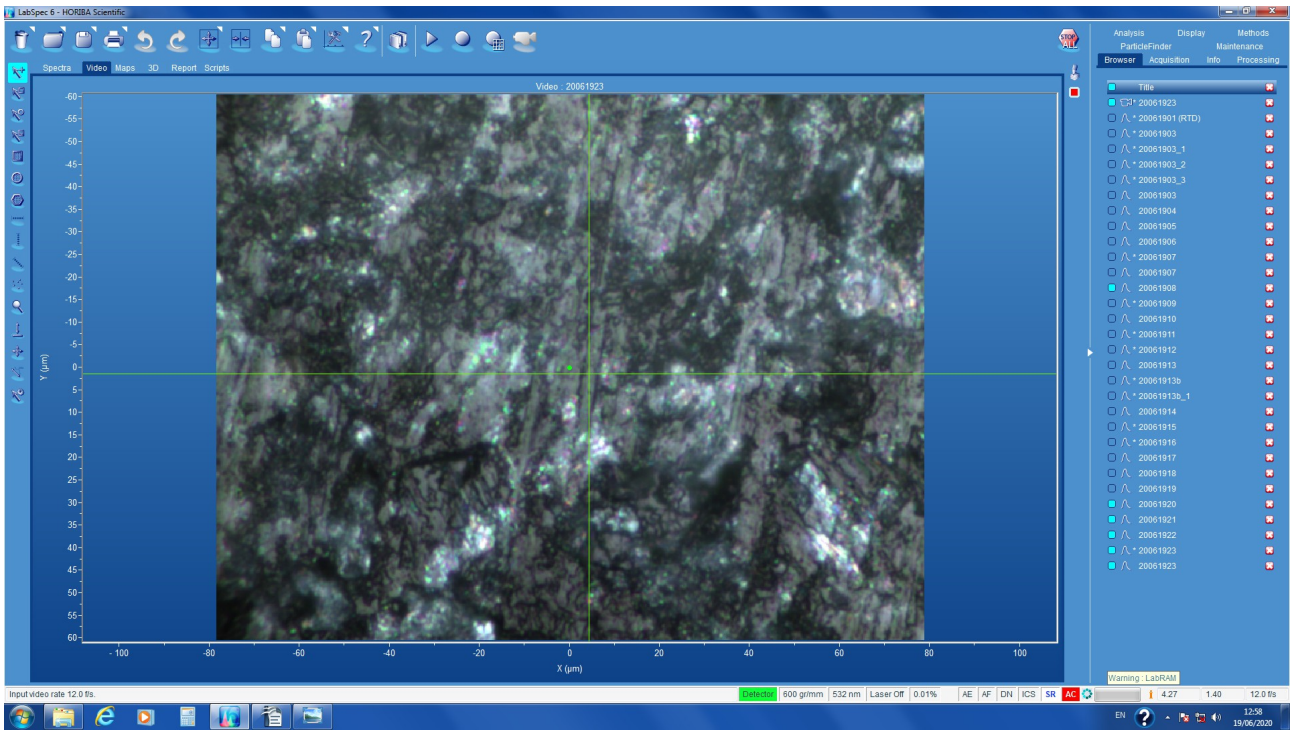
m21



m22



m23



m24

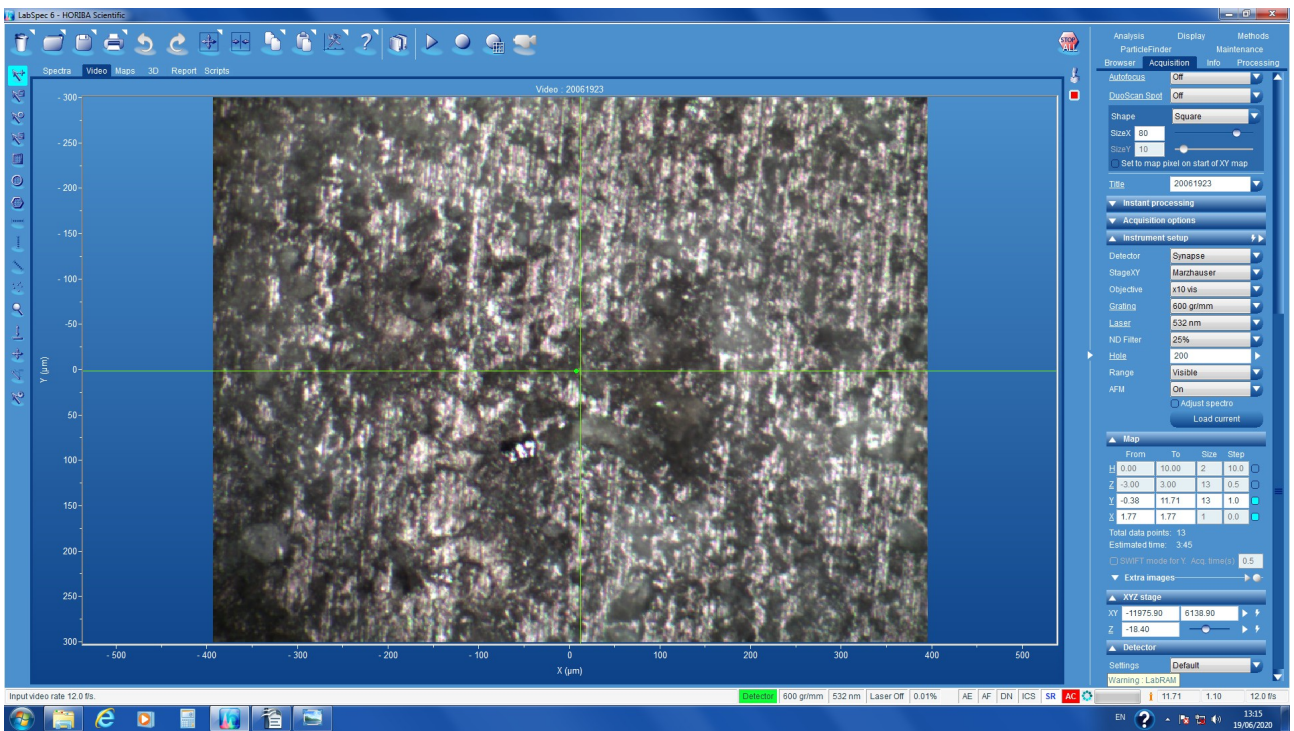
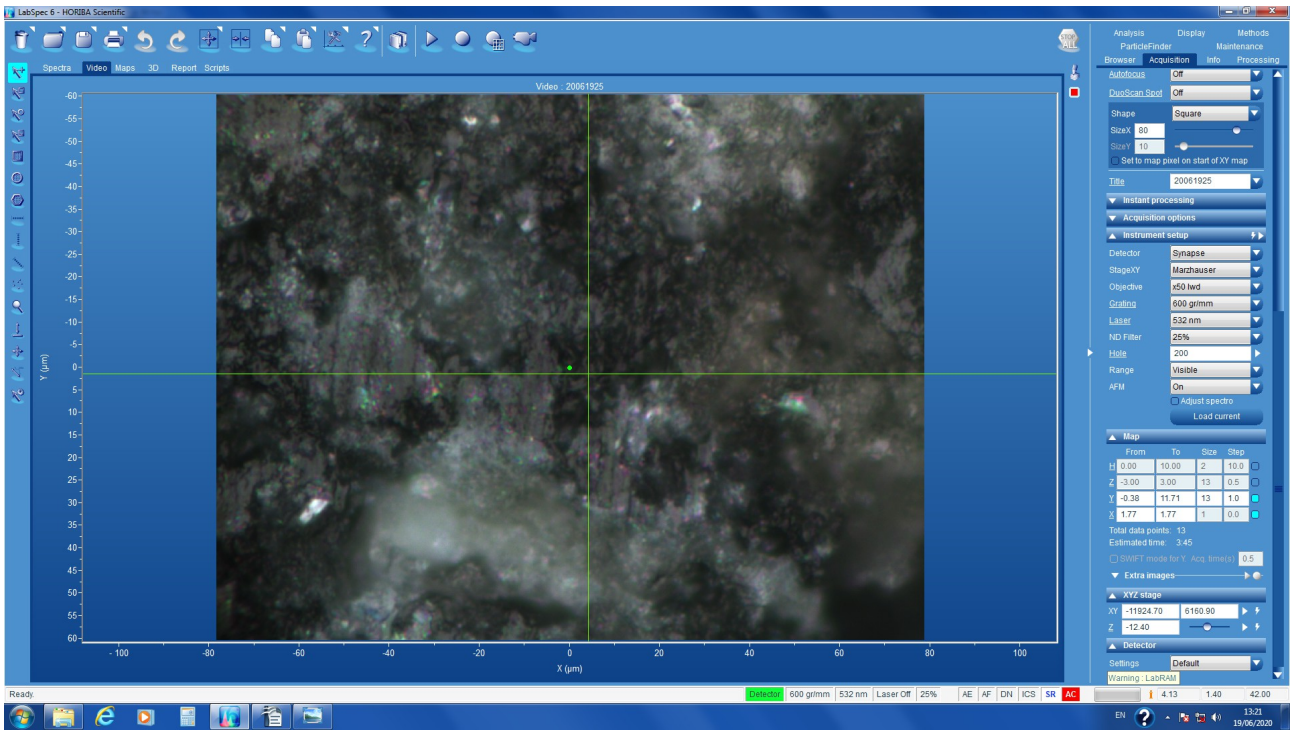
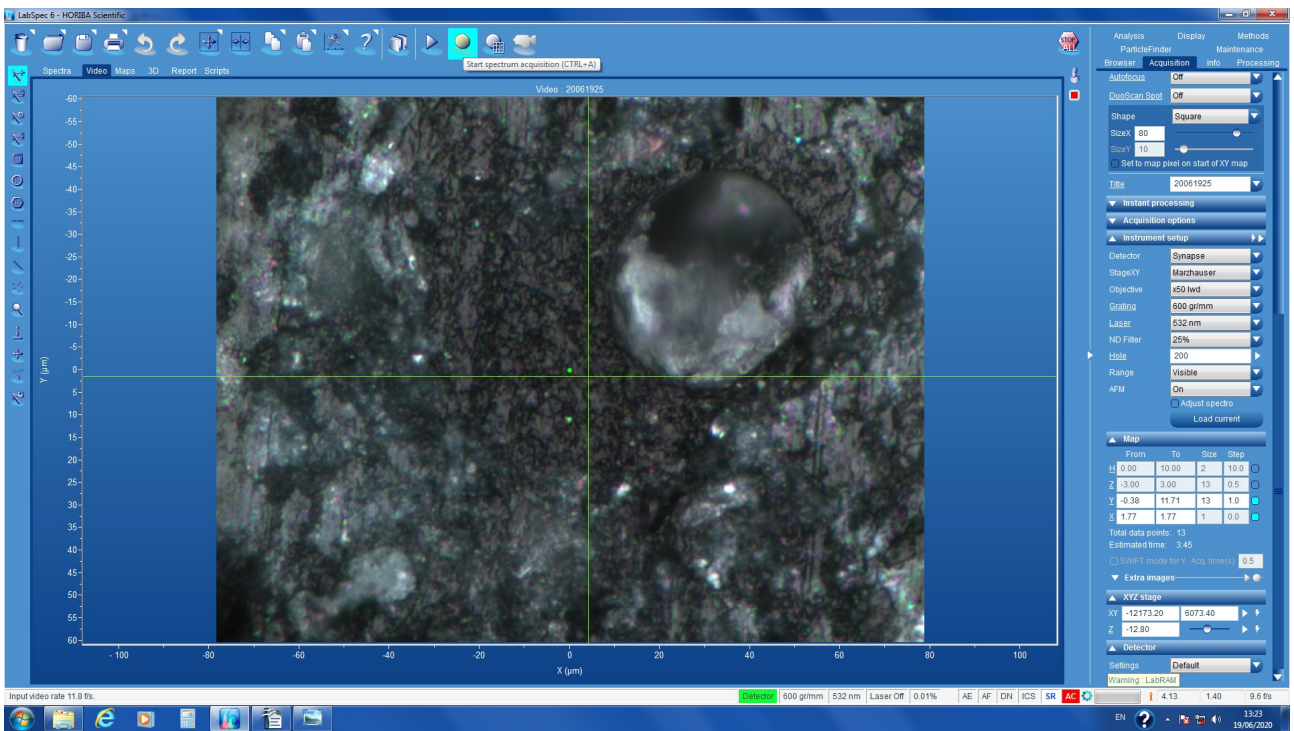


foto 10x pro m25

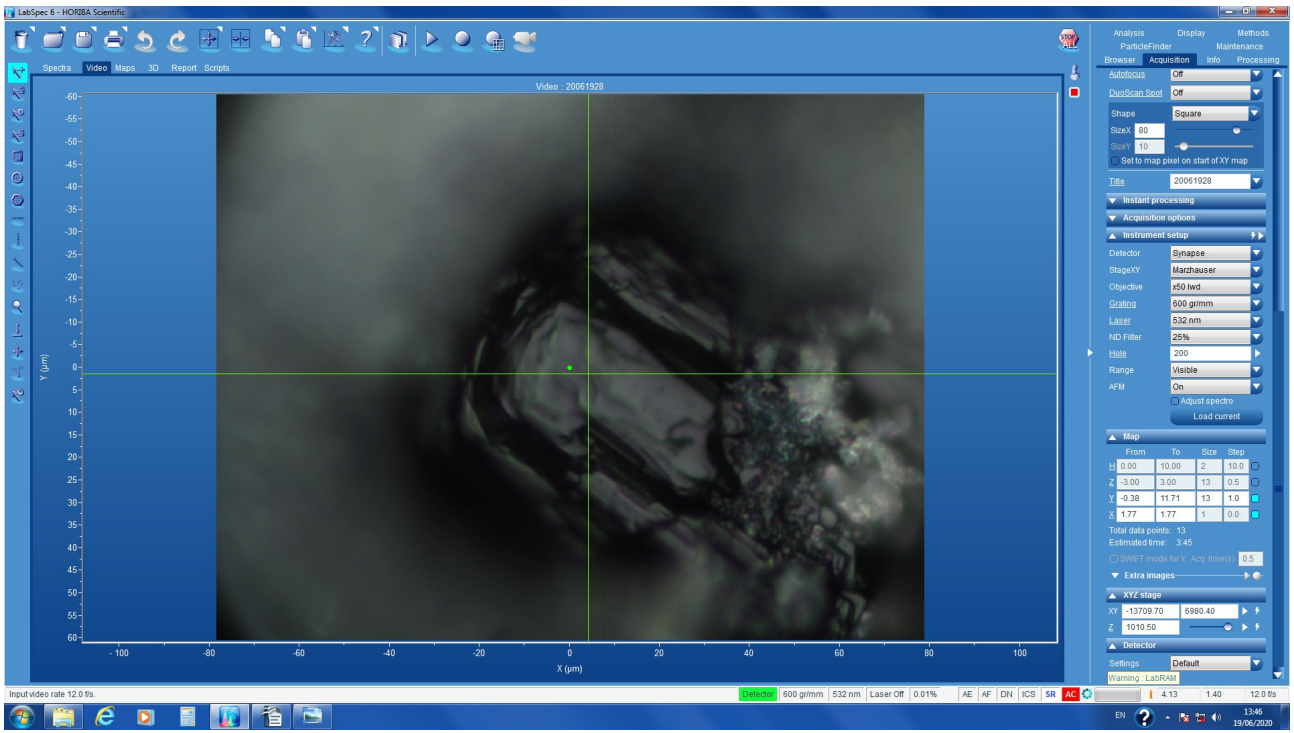


m25

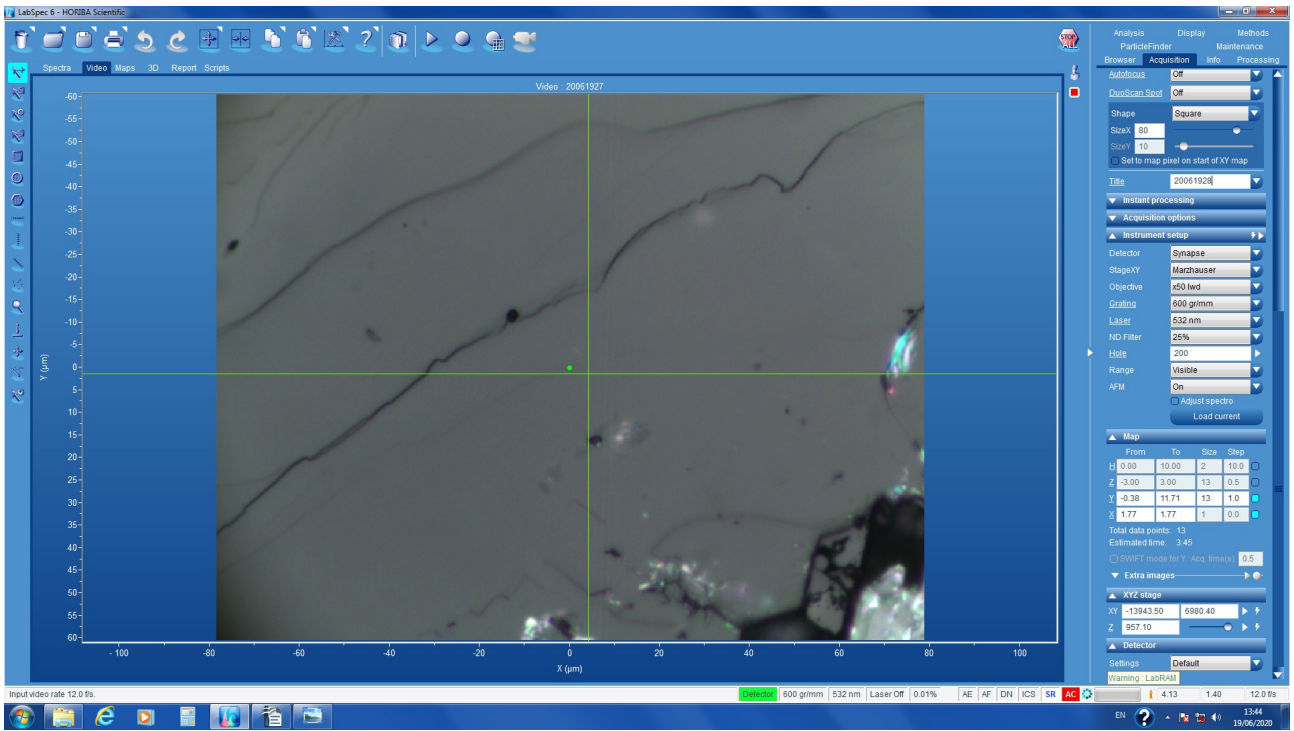


m26

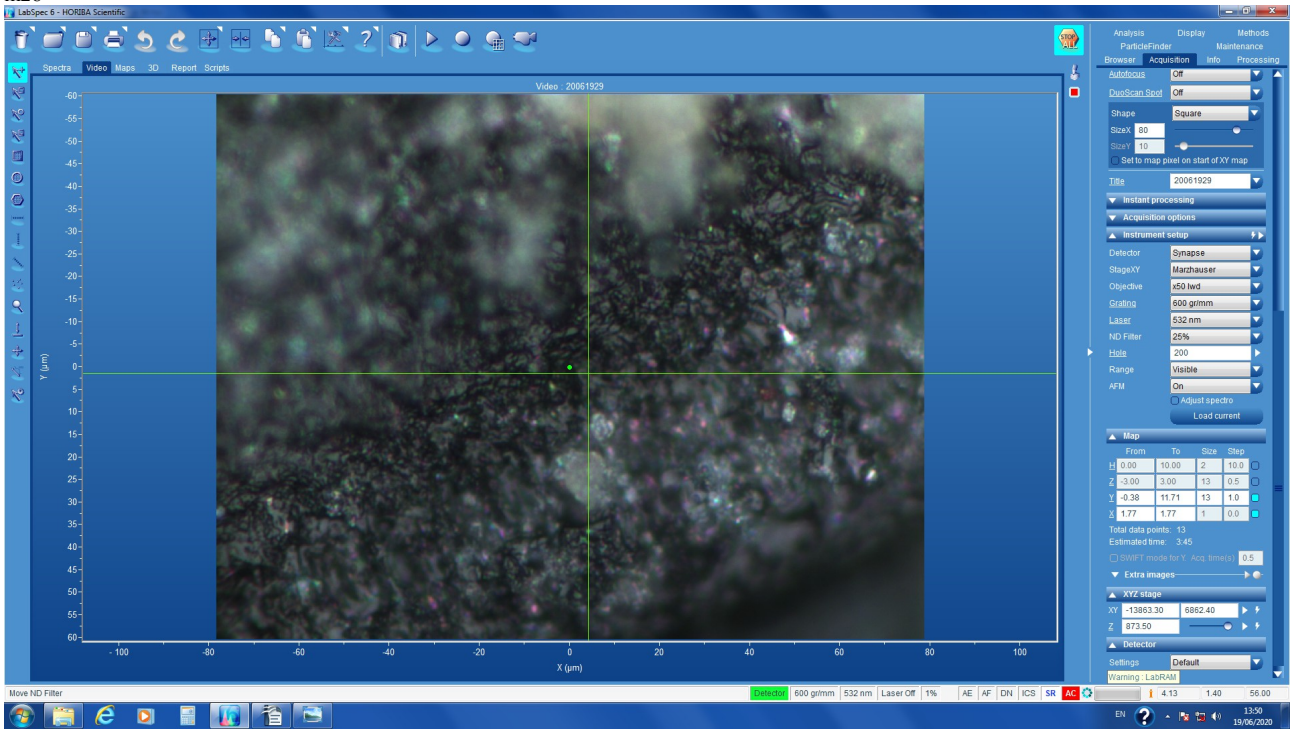




m27



m28



m29